



AUSTIN OAKS LIVINGSTON - BUILDING 4

3420 EXECUTIVE CENTER DR, AUSTIN, TX 78731

**PRIVATE
BUILDING
ENTRANCE!**

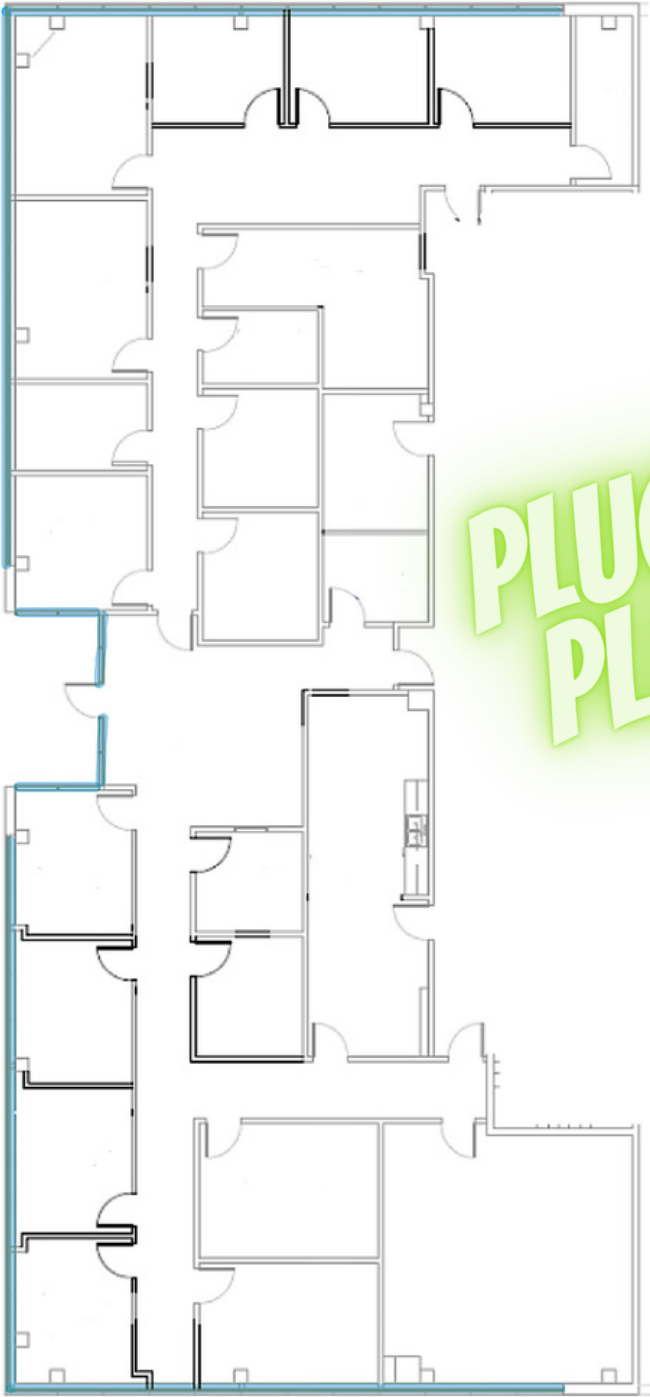
FOR SUBLEASE



- SUITE : G100
- SIZE : 6,549 SF
- BASE RATE : CALL BROKER FOR PRICING
- NNN : \$13.34
- FLEXIBLE SUBLEASE TERM EXPIRING 2/29/28



CHAD JEWELL / 512-633-7703 MOBILE
CHAD@AUSTINOFFICESPACE.COM



PLUG & PLAY!



- PLUG & PLAY WITH FURNITURE IN PLACE
- AMAZING ONE-OF-A-KIND PRIVATE EXTERIOR ENTRANCE
- MONUMENT SIGNAGE
- TEXAS-SIZED FLAG DIRECTS VISITORS TO YOUR FRONT DOOR
- LIGHT-FILLED LOBBY

- 19 PRIVATE OFFICES WITH LOTS OF LIGHT & GLASS
- WOOD PLANK FLOORS
- LARGE KITCHEN WITH SEATING
- TRAINING ROOM WITH MOVABLE TABLES
- AMPLE FREE SURFACE AND STREET PARKING
- AVAILABLE IMMEDIATELY