

Sublease

Pecan Business Park

3913 Todd Lane, Suite 307

Photo:



Size:

4056 SF

Availability:

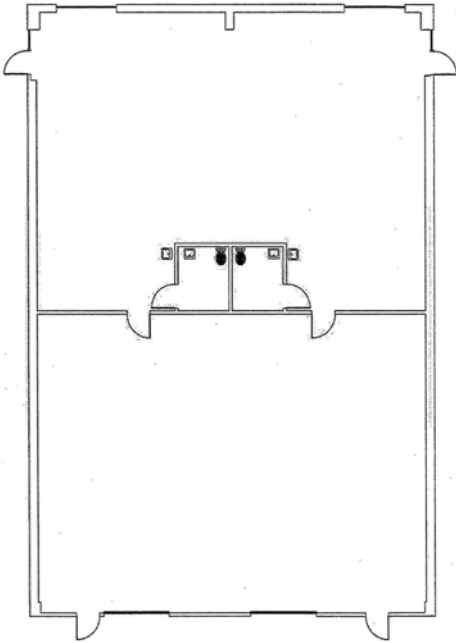
Now

Term:

Sublease term ending 05/31/10

Floorplan:

3913 Todd Lane, Austin, TX
Suite #307
Approximately 4,056 sq. ft.



Rental Rate: (negotiable)

4/1/08 – 5/31/08.....\$0.55 SF + NNN

6/1/08 – 5/31/09.....\$0.57 SF + NNN

6/1/09 – 5/31/10.....\$0.59 SF + NNN

(2008 NNN's are currently estimated at \$0.11 SF)

General:

Half open office with 2 restrooms and two sinks

Half warehouse with two overhead doors. One ramp and one semi-dock

For More Information, Contact:

Nathan K. Smith

Austin Office Space, Inc.

3415 Greystone Dr. #102

Austin, TX 78731

512.349.0003 Office

512.694.7803 Mobile

nsmith@austinofficespace.com

